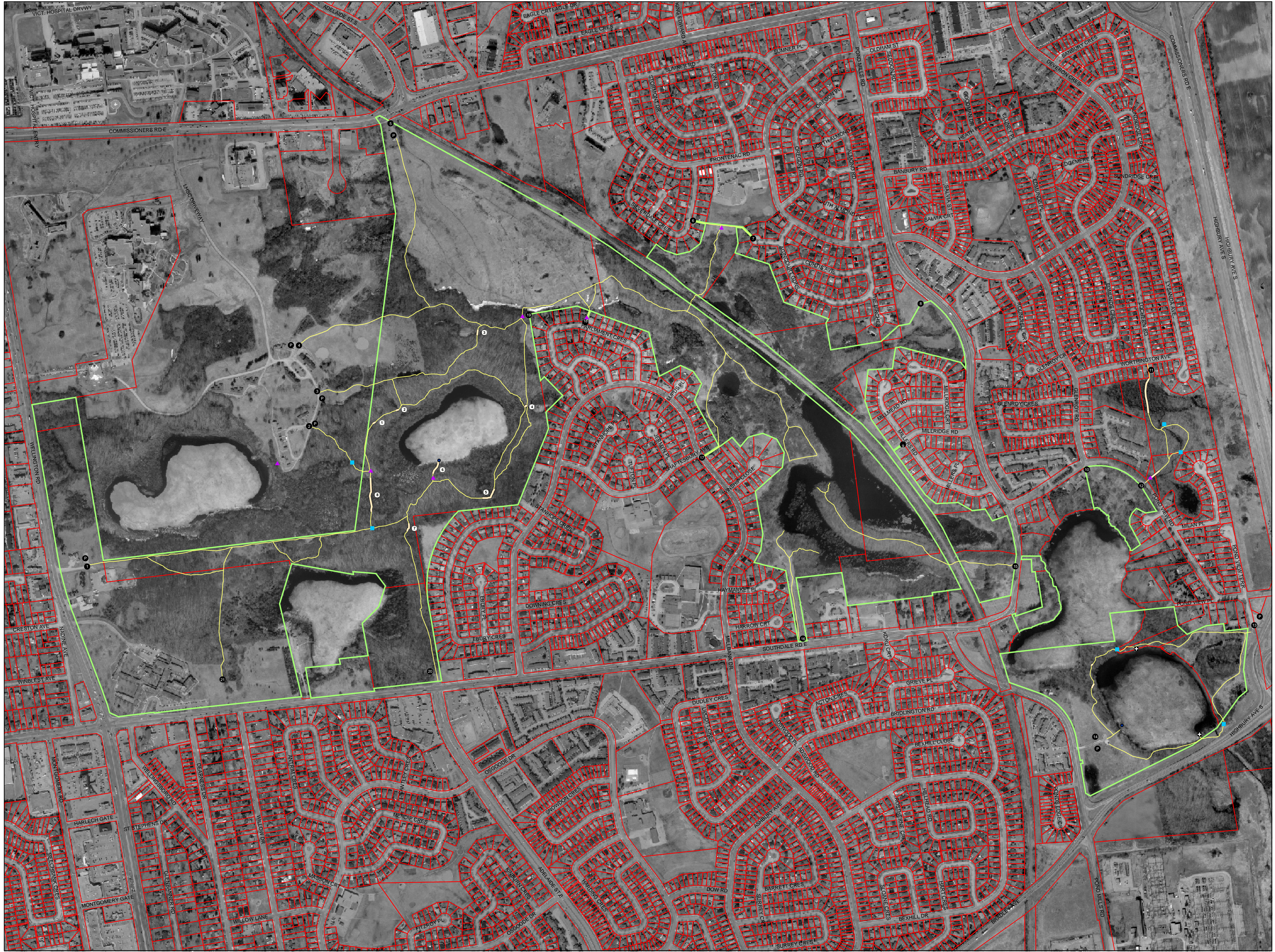


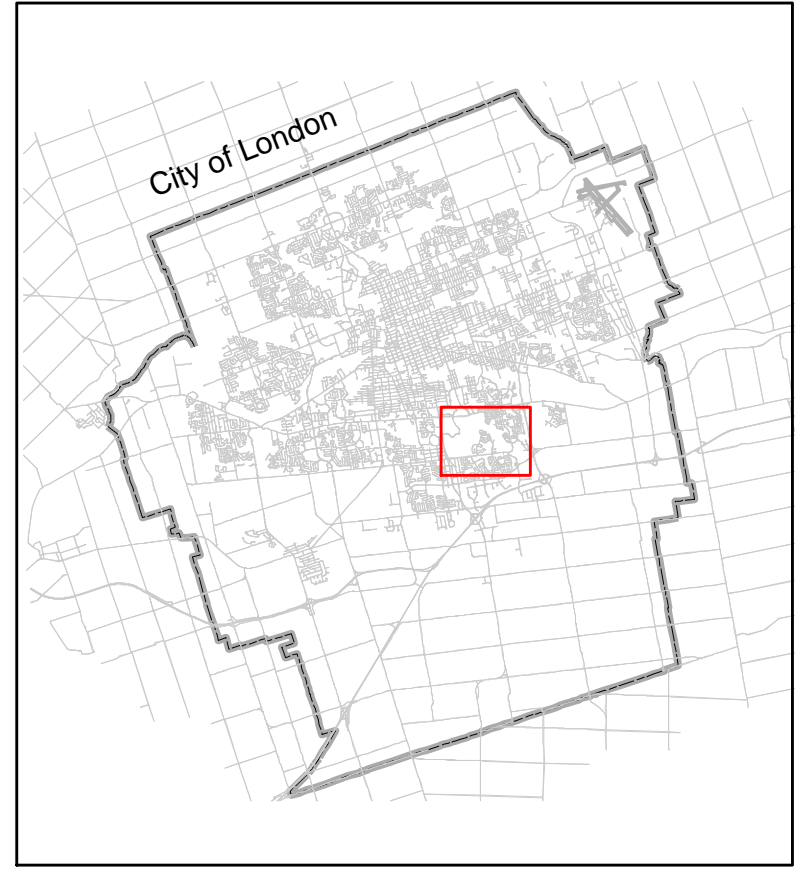
# Westminster Ponds Environmentally Significant Area



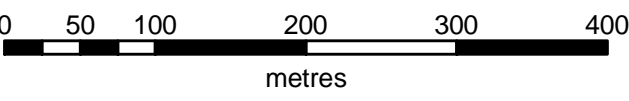
- Legend**
- Bridge
  - Floating
  - ▲ Staircase
  - + Viewing Platform
  - Boardwalk
  - GPS Trail
  - Westminster ESA Boundary (162.5 ha)

- Access Points**
- 01) Wellington Rd at Tourist Info Centre
  - 02) South Parkwood Hospital
  - 03) Middle Parkwood Hospital
  - 04) North Parkwood Hospital
  - 05) Commissioners Road at Adelaide
  - 06) Silverdale Cr.
  - 07) Agincourt Place
  - 08) Pond Mills at Deveron
  - 09) Millers Road
  - 10) Pond View Road - Education Centre
  - 11) Worthington Avenue
  - 12) Pond View Road at Milan
  - 13) Pond View Terrace
  - 14) Pond Mills Road at Bradley Avenue
  - 15) Cemetery at Pond Mills Road
  - 16) Southdale Road East
  - 17) Millbank Drive
  - 18) Parliament Cr.
  - 19) North Spetigue Pond
  - 20) Southdale at Adelaide Street
  - 21) Southdale and Wellington at Dearness
  - P) Parking

**Location Map**



Scale = 1 : 5,000



**UPPER THAMES RIVER**  
CONSERVATION AUTHORITY

Map produced by UTRCA with data provided by the City of London. Copyright UTRCA 2004.